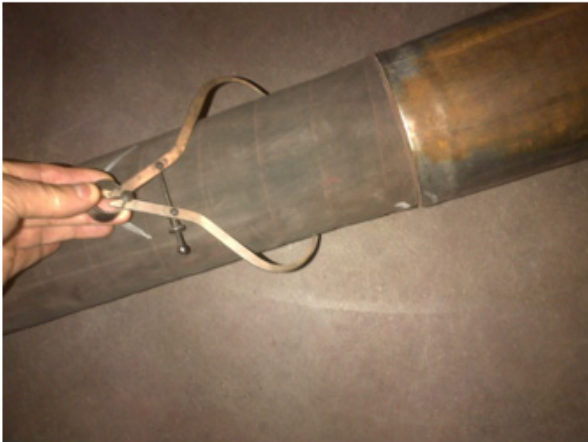
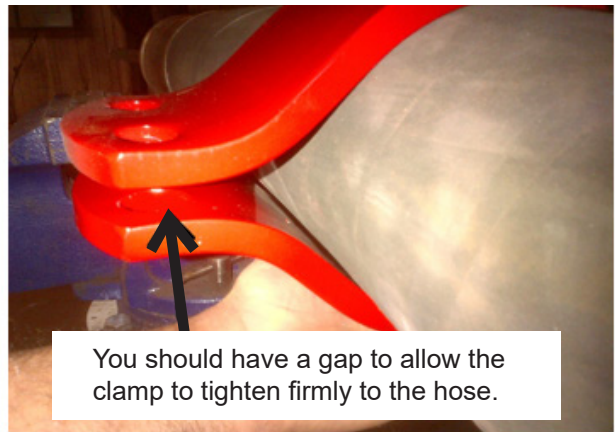


IT IS THE SOLE RESPONSIBILITY OF THE END USER TO INSURE PROPER SIZING & PLACEMENT OF HOBBLE SYSTEMS.

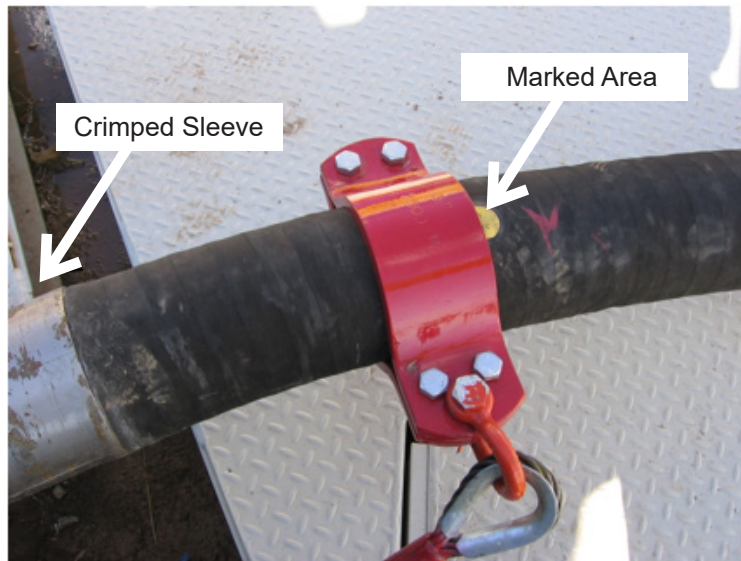
1 MEASURE THE DIAMETER OF THE HOSE.



2 MAKE SURE THE HOBBLE CLAMP IS THE PROPER SIZE.



- 3 FIND PROPER AREA ON HOSE TO INSTALL HOBBLE CLAMP. THE HOSE SHOULD BE MARKED APPROXIMATELY 12" FROM THE CRIMPED FITTING.**



- 4 INSTALL HOBBLE CLAMP, TORQUE THE BOLTS TO APPROXIMATELY 60 FOOT POUNDS UNTIL CLAMP IS FIRMLY ATTACHED TO HOSE.**



- 5 ATTACH CABLE OR CHAIN TO THE HOBBLE CLAMP, THEN ATTACH OTHER END OF THE CABLE OR CHAIN TO A SUITABLE ANCHORING POINT.**

